

## ABOUT OUR CLASSES

**Communicative Health Care Associates** is pleased to offer a range of American Sign Language (ASL) classes for adults and children who want to learn this important and interesting language.

Classes are conducted in ASL and taught by hearing and deaf instructors.

### LEVELS AVAILABLE

Beginners 1, 2, 3

Intermediate 1, 2, 3

Advanced

Selected classes offered each semester.

Private lessons (all levels) also available. Contact us for more information on home or on-site services.

### SCHEDULE

#### Teen Beginners:

Tuesday & Thursday, 10:30am to 12:00pm  
Starts July 9, 2013 for 5 weeks

#### Adult Beginners:

Monday, 6:00pm to 7:30pm  
Starts July 8, 2013 for 8 weeks

Note: our class schedule does not follow the Waltham public school system.

#### COURSE FEE \$225 per person

Based on a class size of 5 or more.

Full payment is required before the first class. To ensure continuity of our courses, there are no refunds after the first week of class.

## COURSE NOTES

### CLASS SIZE

Classes are limited to a maximum of 12 students to allow for personal attention.

All classes are subject to student enrollment.

### CONVENIENT LOCATION

Classes are held at our office which is easily accessible by Route 128 or the MBTA bus #70.

#### Driving Directions

From Route 128, take exit 26E to the intersection of Main Street. We are located at the corner of Main Street and Prospect Hill Ave. Enter through the door on Prospect Hill Ave.

### WEATHER CANCELLATIONS

If there is inclement weather on the day of class, a decision will be made by 4 p.m. if class will be cancelled. Our office will call or leave a voice message for students, but it is the student's responsibility to call the office if there are any questions.

### For More Information

Please contact us at:

Communicative Health Care Associates  
Allied Rehabilitation Associates  
977 Main Street  
Waltham, MA 02451  
Tel: 781-899-4709 Fax: 781-899-4788  
info@CommunicativeHealthCare.com  
**www.CommunicativeHealthCare.com**

*We welcome your inquiries.*



## REGISTRATION FORM

**Pre-registration is required.**

Name \_\_\_\_\_

Address \_\_\_\_\_  
\_\_\_\_\_

Work Tel. (\_\_\_\_) \_\_\_\_\_

Home/Cell Tel. (\_\_\_\_) \_\_\_\_\_

Email \_\_\_\_\_

**How did you hear about this class?**

(If online, which site?)  
\_\_\_\_\_

CLASS	DAY & TIME	Select
Teens Beginners	Tuesday & Thursday 10:30am to 12:00pm	
Adult Beginners	Monday 6:00pm to 7:30pm	

This is your contract with Communicative Health Care Associates, Inc. for ASL classes. \$225/person course fee.

**Refer a friend and receive a \$10 discount** when you both sign-up for a class during the same semester.

Friend's Name \_\_\_\_\_

Your Signature \_\_\_\_\_

Amount Enclosed \_\_\_\_\_

Cash \_\_\_ Check# \_\_\_\_\_

**Please remit payment prior to class to:**

Communicative Health Care Associates  
Attention: Peg Iarossi  
977 Main Street, Waltham, MA 02451

(Office use: Received by \_\_\_\_\_ Date \_\_\_\_\_)

## ABOUT US

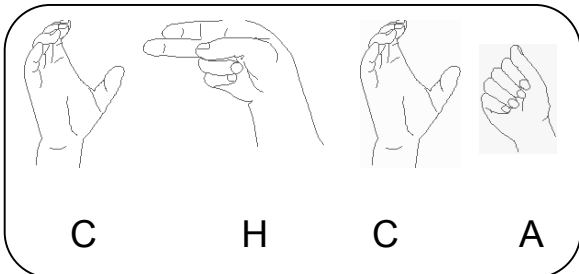
---

### Communicative Health Care Associates

(CHCA) is an independently-owned private practice providing multi-disciplinary diagnostic evaluations and therapy for children, adolescents, adults, and seniors.

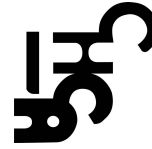
**We provide services** to private and public schools, Head Start, Early Intervention, health care facilities, assisted and independent living, businesses, and individuals.

**For over 35 years**, we have been helping individuals improve their lives through better communication, and greater mobility through our Allied Rehabilitation Associates division.



[www.CommunicativeHealthCare.com](http://www.CommunicativeHealthCare.com)

**REFER A FRIEND. SAVE \$10.**  
See registration form for details.

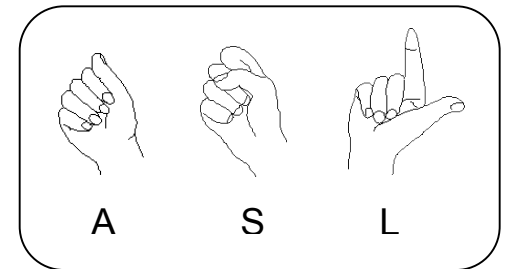


Communicative Health Care Associates, Inc.  
Allied Rehabilitation Associates  
977 Main Street  
Waltham, MA 02451

## Communicative Health Care Associates

---

# American Sign Language (ASL)



Learn ▪ Connect ▪ Have Fun

**REFER A FRIEND.  
SAVE \$10.**

See inside registration form for details.